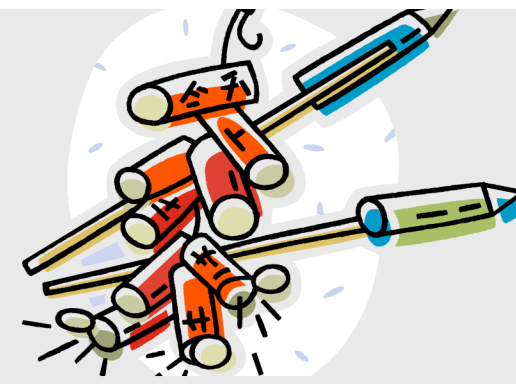


# JANUARY

NHC HealthCare Mauldin Laundry Calendar



# 2018

SUNDAY	MONDAY	TUESDAY	WEDNESDAY	THURSDAY	FRIDAY	SATURDAY
All red numbers represent units 	1	1	2	3	4	5
7	2	3	1	2	3	1
14	3	1	2	3	1	2
21	1	2	3	1	2	3
28	2	3	1	31	Calendar is Done in Advance Subject to Change	Personal laundry is collected in the morning, washed, dried and returned to the appropriate unit within 24 hours.  Be sure to like us on Facebook Channel 901 - For the Latest Menus, Activities and NHC HealthCare updates.